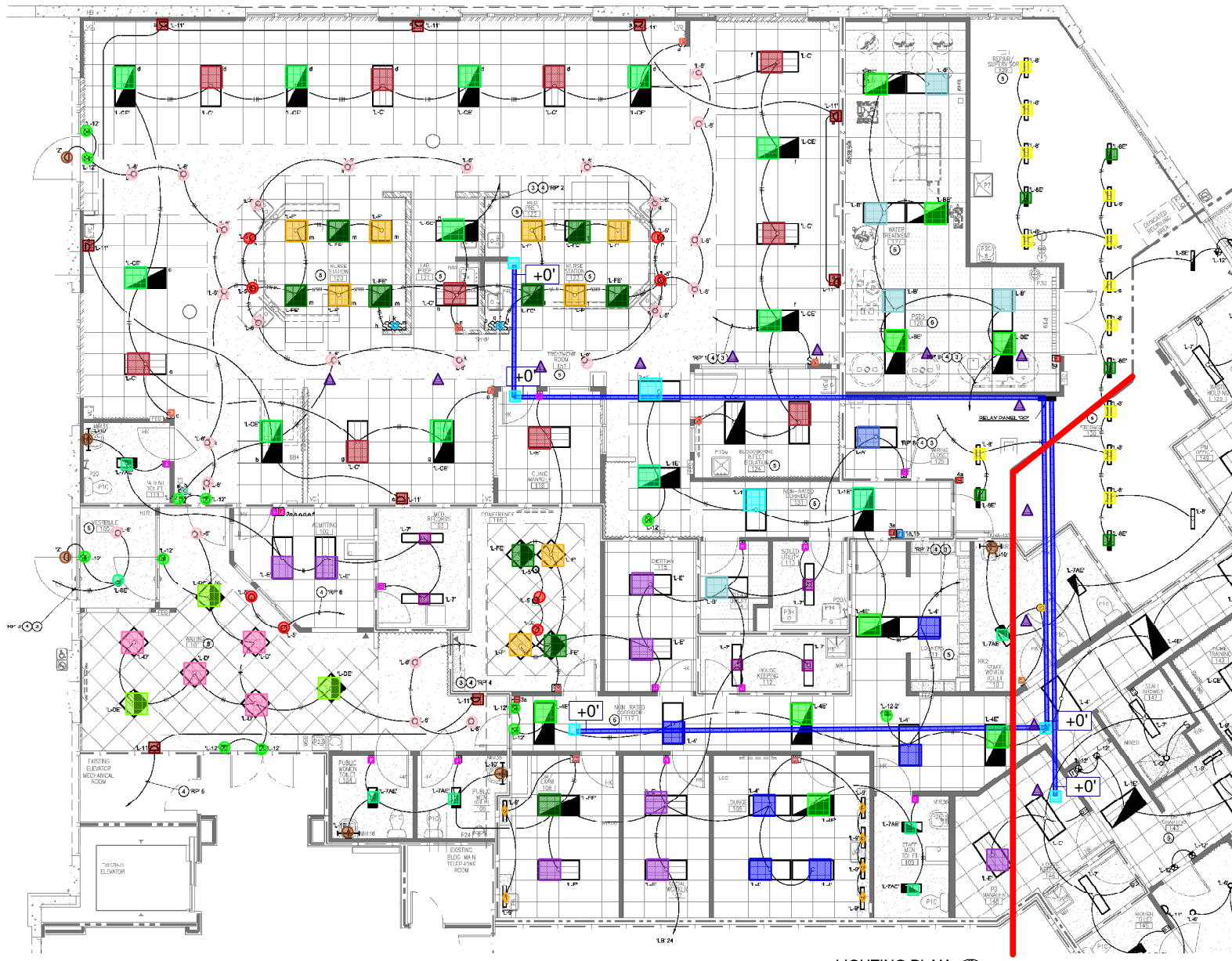


1-11-20
 12-L1E-2 EA
 13-L4-8 EA
 14-L4E-5 EA
 15-L5-8 EA
 16-L6-25 EA
 17-L6E-1 EA
 18-L7-5 EA
 19-L7AE-6 EA
 20-L8-12 EA
 21-L8E-5 EA
 22-L9-8 EA
 23-L10-4 EA
 24-L11-9 EA
 25-LA-1 EA
 26-LB-5 EA
 27-LBE-4 EA
 28-LC-10 EA
 29-LCE-10 EA
 30-LO-4 EA
 31-LOE-9 EA
 32-LE-8 EA
 33-LEE-1 EA
 34-LF-8 EA
 35-Z-3 EA
 36-L10-12 EA
 37-LFE-8 EA
 38-R1 button-4 EA
 39-R2 button-4 EA
 40-R4 button-1 EA
 41-OU WALL-13 EA
 42-OU DECKING-1 EA
 43-Sd-6 EA
 44-S-1 EA
 45-OU WALL DUAL-3 EA
 46-SSSD-2 EA
 47-SSd-1 EA
 48-6 circuit 3/4" 9 #12 T-BAR-173 LF
 49-5sq T-BAR-5 EA
 44-3' trapeze-13 EA



- ### LIGHTING PLAN GENERAL NOTES:
- REFER TO ARCHITECTURAL REFLECTED CEILING PLAN FOR PRECISE LOCATIONS OF ALL FIXTURES.
 - "N" DESIGNATION INDICATES NIGHT LIGHT WITH INWARD LAMP ON UNWIDENED CIRCUIT CUTBOARD LAMPS INWARD LAMP.
 - DIAGONAL LINE THRU FIXTURE INDICATES SEPARATE CONTROL OF INWARD AND CUTBOARD LAMPS.
 - HAIR-READING AT FIXTURE INDICATES FIXTURE WITH EMERGENCY BATTERY BACKED BALLAST ON CUTBOARD LAMP. FIXTURES NOT INDICATED TO BE NIGHT LIGHTS TO HAVE BATTERY TRIGGER LEAD WIRING TO UNWIDENED CIRCUIT TO ACCOMMODATE FIXTURE SWITCHING. BATTERY BALLASTS TO PROVIDE MINIMUM 120 LUMENS.
 - LIGHTING FIXTURES IN EACH ROOM AND PASSAGEWAY SHALL BE EQUIPPED WITH A PROTECTIVE LENS OR DIFFUSER.
 - ILLUMINATION FOR MEANS OF EGRESS AND EXIT LIGHTS IN HOSPITALS/CLINICS SHALL BE PROVIDED USING BATTERY-OPERATED EQUIPMENT WITH A MINIMUM 1 HR HOUR CAPACITY AFTER LOSS OF THE NORMAL SOURCE.
 - ALL CONDUCTORS TO BE COPPER WITH THIN WAIN INSULATION. #12 AND SMALLER TO BE SOLID. #10 AND LARGER TO BE STRANDED.
- NOTE: EXIT SIGNS SHALL BE ILLUMINATED AT ALL TIMES.
- NOTE: EXIT SIGNS SHALL BE INTERNALLY ILLUMINATED.
- NOTE: ALL MULTITRIMMER BRANCH CIRCUITS TO HAVE SEPARATE NEUTRALS OR CIRCUIT BREAKER HANDLE TIES TO MEET THE REQUIREMENTS OF NEC/CEC WHEN IN CALIFORNIA.
- ALL BRANCH CIRCUITRY TO PATIENT CARE AREAS (EEM, TREATMENT AREAS, ETC.) TO BE PROVIDED WITH INSULATED COPPER GROUNDING CONDUCTORS AND ROUTED IN THE FLOOR/SOUL.
- THE EMERGENCY POWER SYSTEM SHALL PROVIDE POWER FOR A DURATION OF NOT LESS THAN 90 MINUTES AND SHALL CONSIST OF STORAGE BATTERIES, UNIT EQUIPMENT OR AN ONLINE GENERATOR. THE INSTALLATION OF THE EMERGENCY POWER SYSTEM SHALL BE IN ACCORDANCE WITH SECTION 9702.
- THIS PROJECT IS AN OCCUPANCY AND IS EXEMPT FROM THE BUILDING ENERGY EFFICIENCY STANDARDS (SECTION 90.2 (a)(1)).
- TYPE MC AND AC CABLE SHALL NOT BE USED THIS PROJECT.
- OTHER THAN EMERGENCY LIGHTING, EMERGENCY POWER IS NOT REQUIRED THIS CLINIC. THE PATIENT CARE FRAMES TO REMOIVE THEMSELVES FROM THE MEMO-DUAL WARE EQUIPMENT UPON LOSS OF POWER AND CLINIC ADMITTANCE POLICIES DO NOT ALLOW PATIENTS TO BE LEFT WITHOUT LIGHTING SUPPORT.
- A NATIONAL ACCOUNT HAS BEEN ESTABLISHED WITH GRAYBAR ELECTRIC IN ATLANTA AND SMART LIGHTING SOLUTIONS AS THE FMC BOX INVENTORY PROVIDER FOR ALL ACTIVITY UNDER PROGRESS INCLUDING BUT NOT LIMITED TO: IFFRONA LIGHTING, HEAL THARE LIGHTING, COFFMANN LIGHTING, SENSORSWITCH AND BUDDEBOK CONTACT PROJECTCLOUTIER@SMARTLIGHT.COM FOR PRICING.

- ### LIGHTING PLAN KEYED NOTES:
- COORDINATE DIMMER SELECTION WITH FEATURE PROVIDED.
 - PROVIDE #14 ADDITIONAL WIRES FOR THE 0-10V DIMMING CONTROL (NOT SHOWN FOR CLARITY).
 - HOWAS: SEPARATE UNWIDENED NOT CONDUCTOR OR NOT CONTROLLED BY RELAY/EXIT SIGNS. EMERGENCY FIXTURE/BATTERY TRIGGER, LEADS, NIGHT LIGHTS, OR OTHER LOCALLY CONTROLLED FIXTURES.
 - ROUTE CIRCUITRY THROUGH LIGHTING RELAY PANEL. "RP" REFER TO SCHEDULE THIS SHEET, FOR MORE INFORMATION.
 - ALL LIGHT FIXTURES THIS ROOM CONTROLLED BY RELAY IN ADDITION TO LOCAL SWITCHES. REFER TO RELAY PANEL SCHEDULE "RP" FOR MORE INFORMATION.

- ### ELECTRICAL SYMBOLS LIST
- NOTE: DIMENSIONS TO CENTERLINES, COORDINATE ALL INSTALLATIONS
- LIGHTING FIXTURE - SUBSCRIPT LETTER DENOTES FIXTURE TYPE AS DESCRIBED IN LIGHT FIXTURE SCHEDULE. LOWER CASE LETTER INDICATES SWITCHING CONTROL.
 - S: SINGLE POLE SWITCH @ 4" AFF UNO. LOWER CASE LETTER DENOTES FIXTURE CONTROL. 300V, 20A.
 - S3: THREE WAY SWITCH 300V, 20A, MTD @ 4" AFF UNO. (SIMILAR FOR 400V).
 - S4: DIMMER SWITCH @4" AFF UNO, 300V 0-10V DIMMER SWITCH TO DM FIXTURES.
 - W: WALL BOX, OCCUPANCY(V) OR VACANCY (V) SENSOR SWITCH WITH OPTION CONTROL. AND ADJUSTABLE SETTINGS FOR FOOTCANDLE LEVEL AND OFF DELAY. "U" SUBSCRIPT DENOTES TRIGGER OR DUAL TECHNOLOGY DEVICE. "P" SUBSCRIPT DENOTES PASSIVE INFRARED DEVICE. COORDINATE DEVICE SELECTION WITH ROOM SIZE. PROVIDE NEUTRAL AS REQUIRED BY DEVICE. MOUNT AT 4" AFF UNO. SENSORSWITCH.
 - C: CEILING MOUNT, 8" DIA RECESSED, LOW VOLTAGE OCCUPANCY(V) OR VACANCY (V) SENSOR SWITCH WITH POWER PACK, AND ADJUSTABLE SETTINGS FOR FOOTCANDLE LEVEL AND OFF DELAY. "U" SUBSCRIPT DENOTES TRIGGER OR DUAL TECHNOLOGY DEVICE. "P" SUBSCRIPT DENOTES PASSIVE INFRARED DEVICE. COORDINATE DEVICE SELECTION WITH ROOM SIZE. PROVIDE NEUTRAL AS REQUIRED BY DEVICE. MOUNT AT 8" DIA UNO. SENSORSWITCH.
 - BRANCH CIRCUITRY CONCEALED IN WALL OR CEILING.
 - BRANCH CIRCUITRY ROUTED UNDERGROUND.
 - BRANCH CIRCUITRY HOMERUN TO PANEL AS NOTED ON PLANS.
 - DETAIL KEY: REFER TO STANDARD DETAILS.
 - W: WALL BOX, LOW VOLTAGE, MOMENTARY SWITCH WITH PILOT LIGHT TO WORK WITH REMOTE RELAY PANEL. PROVIDE CONTROL WIRING AS REQUIRED TO RELAY PANEL. MOUNT AT 4" AFF UNO. LOWER CASE LETTERS INDICATE SWITCH BUTTON ASSIGNMENT. SEE RELAY PANEL SCHEDULE.

LIGHTING PLAN

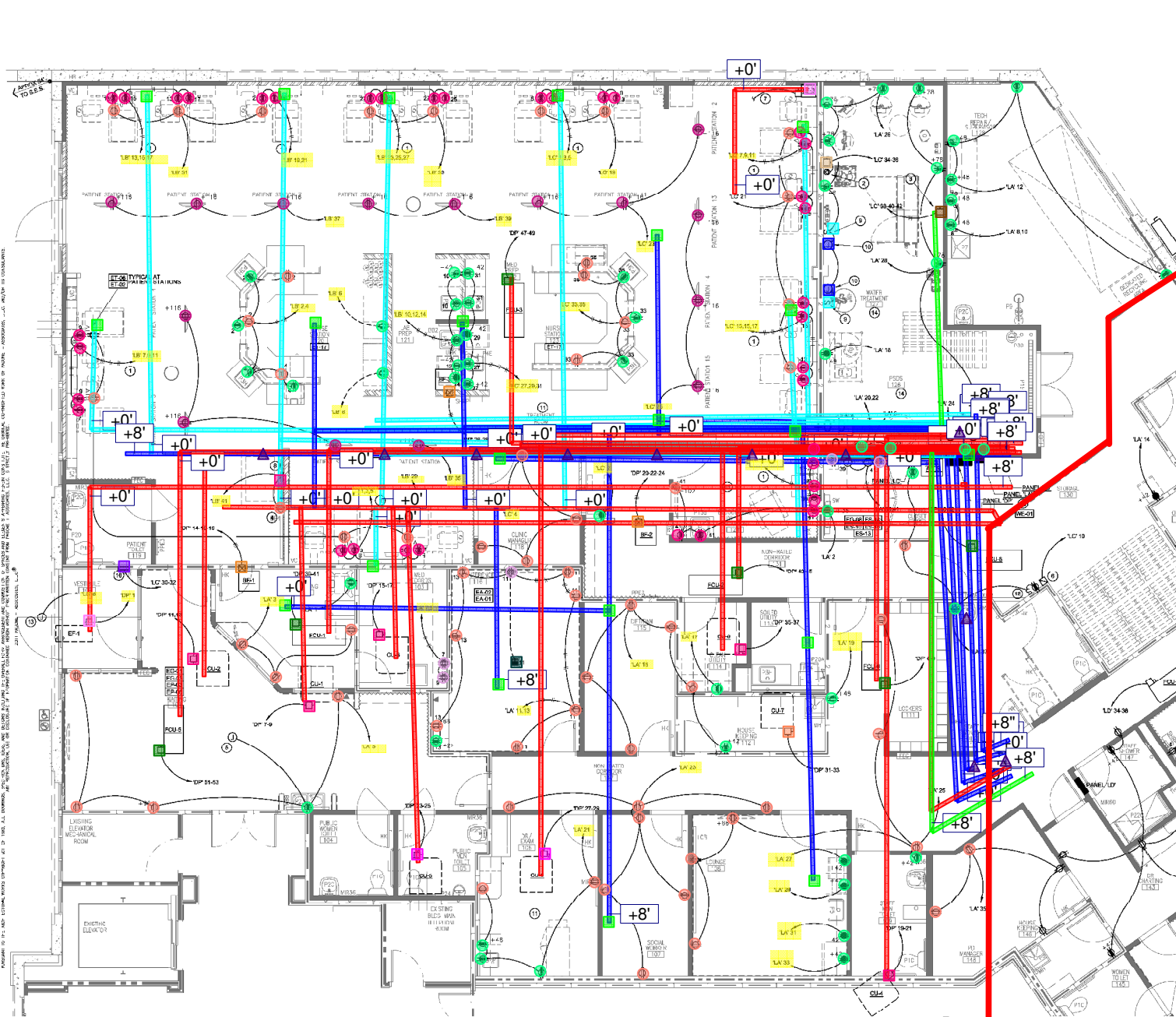
PAGONE + ASSOCIATES
 architects
 13627 S. 32nd PLACE
 PHOENIX, ARIZONA 85044
 TEL: (602) 483-8161 FAX: (602) 483-8160
 map@pagoneassoc.com

Proposed Tenant Improvement for:
SAN JUAN CAPISTRANO JV
 5804
 31001 RANCHO VIEJO ROAD
 SAN JUAN CAPISTRANO, CA 92675

FRESENIUS MEDICAL CARE

DRAWN: SAL
 MANAGER: DCW
 REVIEWED: DCW
 PROJECT: 18023
 DATE: 7.22.16
 REVISION:

E 2.0a
 Lighting Plan



ELECTRICAL SYMBOLS LIST

NOTE: DIMENSIONS TO CENTERLINES. COORDINATE ALL INSTALLATIONS.

- DETAIL KEY REFER TO STANDARD DETAILS
- DUPLEX RECEPTACLE - 1" AFF
- DUPLEX RECEPTACLE - HEIGHT AFF INDICATED
- QUAD RECEPTACLE - DEDICATED
- DUPLEX RECEPTACLE - GR
- DUPLEX RECEPTACLE - DEDICATED
- DUPLEX RECEPTACLE - DEDICATED GFI
- DUPLEX RECEPTACLE - HOSPITAL GRADE GFI
- DUPLEX RECEPTACLE - HOSPITAL GRADE GFI (SHARED - IVORY)
- FLUSH IN FLOOR POWER/TELEPHONE DATA STATION WITH RECESSED ACTION. PROVIDE WITH DUPLEX RECEPTACLE. PROVIDE 34" CONDUIT FROM POWER SECTION TO 1" x 1/8"
- DISCONNECT SWITCH WITH RATINGS AS SHOWN ON PIPES
- BRANCH CIRCUITRY CONCEALED IN WALL OR CEILING
- BRANCH CIRCUITRY ROUTED UNDERGROUND
- BRANCH CIRCUITRY HOMERUN TO PANEL AS NOTED ON PLANS
- JUNCTION BOX
- DUPLEX CONVENIENCE OUTLET. SPLIT WIRED WITH THE BAR REMOVED. 120V, 20A, INTD. 3" AFF UPFLUNG.

NOTE: FUSES SHALL BE PROVIDED WITH REJECTION TYPE FUSE HOLDERS.

NO PIPING, DUCTS OR EQUIPMENT FORBIDDEN TO ELECTRICAL EQUIPMENT SHALL BE PERMITTED TO BE LOCATED WITHIN THE DESIGNATED SPACE ABOVE THE ELECTRICAL EQUIPMENT (PANELS, TRANSFORMERS, ETC.).

NOTE: ALL 120V BRANCH CIRCUITS TO HAVE SEPARATE NEUTRALS OR CIRCUIT BREAKER HANDLE TIED TO MEET THE REQUIREMENTS OF IEC 100 (WHEN IN CALIFORNIA).

CONTRACTOR TO FIELD VERIFY CAPD, HOME, HEMO, TV AND PATIENT SERVICES LOCATIONS WITH FINE PRINT FOR ROUGH-IN.

ALL BRANCH CIRCUITRY TO PATIENT CARE AREAS (EXAM, TREATMENT AREAS, ETC.) TO BE PROVIDED WITH INSULATED COPPER GROUNDING CONDUCTORS, AND ROUTED IN METALLIC CONDUIT.

TYPES MC AND AC CABLE SHALL NOT BE USED THIS PROJECT.

OTHER THAN EMERGENCY LIGHTING, EMERGENCY POWER IS NOT REQUIRED FOR CLINIC. THE WORKING TEAM IS TO REMOVE THEMSELVES FROM THE HEMO-DIALYSIS EQUIPMENT UPON LOSS OF POWER, AND CLINIC ADMIT TANGIBLES DO NOT ALLOW PATIENTS RE-ENTER IF IN ROOM.

- 42 - 6-circuit 3/4" x 1/2" T-Bar - 770 LF
- 44 - 3" Trapeze - 12 EA
- 45 - GFI DUPLEX - 55 EA
- 46 - DUPLEX #12 - 64 EA
- 47 - T-Bar DUPLEX - 15 EA
- 48 - QUAD - 5 EA
- 49 - RT CU 50A - 5 EA
- 50 - RT CU 40A - 1 EA
- 51 - RT CU 30A - 2 EA
- 52 - FAN COIL 20A - 6 EA
- 53 - BF 1-4 - 3 EA
- 54 - COMBO FLOOR BOX - 1 EA
- 55 - GFI DUPLEX #10 - 37 EA
- 56 - 3-circuit 1" x 1/2" T-Bar - 721 LF
- 57 - 3-circuit 1" x 1/2" T-Bar - 55 J-BOX - 9 EA
- 58 - 6-circuit 5/8" J-BOX - 12 EA
- 59 - BOOSTER PUMP NOTE 3 E2.1a - 1 EA
- 60 - RO DISCONNECT NOTE 3 E2.1a - 1 EA
- 61 - 3/4" x 1/2" T-Bar - 103 LF
- 62 - floor scale - 1 EA
- 63 - EF - 2 EA
- 64 - WALL HEATER - 1 EA
- 65 - 3/4" x 1/2" T-Bar - 50 LF
- 66 - 1/2" x 3/4" T-Bar - 473 LF
- 68 - 120V J-BOX - 2 EA
- 69 - Sm - 2 EA

POWER PLAN GENERAL NOTES

1. COORDINATE PREISE DEVICE MOUNTING HEIGHTS AND LOCATIONS WITH MECHANICAL PLANS, OWNER, ETC.
2. REFER TO MECHANICAL DRAWINGS FOR PREISE LOCATIONS OF ALL MECHANICAL UNITS.
3. DEMO ALL EXISTING ELECTRICAL FROM BUREAU I/O.
4. NONMETALLIC MULTI-OUTLET ASSEMBLIES SHALL NOT BE USED IN CLINIC.
5. IN CLINIC PATIENT CARE AREAS, THE GROUNDING TERMINALS OF ALL RECEPTACLES AND ALL NON-PERMANENTLY CARRYING CONDUCTIVE SURFACES OF EXISTING ELECTRICAL EQUIPMENT SHALL BE GROUNDING CONTACT OPERATING OVER 100 VOLTS. SHALL BE GROUNDING BY AN INSULATED COPPER CONDUCTOR. BRANDS OF CONDUCTORS ON THE PLANS SHALL CONTAIN THIS INSULATED GROUNDING CONDUCTOR.
6. THE WIRING METHOD IN CLINIC PATIENT CARE AREAS SHALL BE IN METAL RIGIDLY CONDUIT ASSEMBLIES. METALLIC BACKINGS AND CONDUIT ASSEMBLIES SHALL BE APPROVED AS A GROUND PATH. ALL CIRCUITRY THESE PLANS TO BE USED, EXCEPT WHERE NOTED TO BE IN CLINIC, SHALL BE IN METAL RIGIDLY CONDUIT.
7. THE FOLLOWING WIRING METHODS ARE NOT ALLOWED IN CLINIC PATIENT CARE AREAS:
 - NONMETALLIC CABLE TRAYS
 - ELECTRICAL NONMETALLIC TUBING
 - NONMETALLIC CONDUIT
 - NONMETALLIC EXTENSIONS
 - RIGIDLY CONDUIT
 - SURFACE NONMETALLIC RACEWAYS, EXCEPT LOW VOLTAGE APPLICATIONS
8. PANELBOARDS SERVING NORMAL AND ESSENTIAL BRANCH CIRCUITS IN CLINIC SHALL HAVE THEIR GROUNDING TERMINAL BUSED TOGETHER WITH A MINIMUM #10 INSULATED GROUNDING TERMINAL IN CLINIC PATIENT CARE AREAS SHALL HAVE IDENTICAL MEANS VISIBLE AFTER INSTALLATION.
9. RECEPTACLES WITH INSULATED GROUNDING TERMINALS IN CLINIC PATIENT CARE AREAS SHALL HAVE IDENTICAL MEANS VISIBLE AFTER INSTALLATION.
10. ALL RECEPTACLE OUTLETS AND FIXED EQUIPMENT WITHIN WET LOCATION IN CLINIC SHALL HAVE GFCI PROTECTION.
11. FIXED EQUIPMENT INSTALLED IN WET LOCATIONS WHERE AN ELECTRICAL POWER SYSTEM IS USED SHALL BE LISTED TO THE PURPOSE AND INSTALLED IN ACCORDANCE WITH THE CODE PROVISIONS GOVERNING SUCH EQUIPMENT.
12. ALL SIGNS REQUIRE SEPARATE PERMITS AND APPROVALS.
13. ALL EQUIPMENT SHALL BE LISTED BY A NATIONALLY RECOGNIZED TESTING LABORATORY.
14. ALL ELECTRICAL EQUIPMENT EXPOSED TO THE WEATHER SHALL BE LISTED TO THE WEATHER.
15. ALL CONTRACTORS TO BE COPPER, WITH THIRTYTHREE INCHES #12 AND SMALLER TO BE SOLID, #10 AND LARGER TO BE STRANDED.

POWER PLAN KEYED NOTES:

1. EQUIPMENT TO BE FIELD DEBATED HOTS AND NEUTRALS, 1" CONDUIT. INSULATED TO BE INSULATED.
2. BOOSTER / DIST. PUMP: 250V, 1/2, 2 HP. PROVIDE 30A, 3P, 3F, DISCONNECT SWITCH WITH FUSES PER MANUFACTURERS REQUIREMENTS. PROVIDE PUMP COORDINATE LOCATION AROUND PUMP AND PUMP. FEED DISC. THROUGH 2 1/2" RVA BOOST TRANSFORMER LOCATED ABOVE USE. SW. 40M 4E-4050 OR EQUAL. BRANCH CIRCUIT ORIGINATES AT PANEL (RAMP). ROUTES THROUGH DISC SW. TO TRANSFORMER AND ON TO RECESSED WALL MOUNTED RECEPTACLE FOR VFD CONNECTION. COORDINATE RECEPTACLE LOCATION WITH EQUIPMENT PRIOR TO INSTALLATION.
3. R/O SYSTEM: 2500V, 3P, 7 1/2 HP. PROVIDE 30A 3P DISC SWITCH WITH 40A 3P FUSES AT 12" AFF TO CENTER VFDY ROOM IN LOCATION ABOVE R/O MACHINE. FEED WITH #4 GROUND, 1" CONDUIT. PROVIDE INSULATED FLEX TO UNIT.
4. DUPLEX RECEPTACLE IN WALL AT APPROX. 6.6 1/4" AFF TO CENTER. COORDINATE LOCATION BEHIND WALL MOUNTED CHECK-IN STATION PRIOR TO ROUGH-IN.
5. 2 #12 #12 GND, 1/2" CONDUIT TO INTERIOR AND HARDW. CALL. POWER SUPPLIES. REFER TO COMMUNICATIONS PLANS FOR DOOR OPERATOR SIGNAL LOCATIONS.
6. TIMELOCK CONTROL LOCATION FOR EXHAUST FAN CONTROL. 120V, 40 3P, 3F, 3W, 100% HORSE, OR EQUAL (HORSE POWER RATED).
7. FLOOR CIRCUIT THROUGH EXHAUST FAN TIMELOCK (KEYED NOTE #6).
8. FLOOR ENCLOSURE IN WALL AT 4'18" AFF TO CENTER FOR FLOOR SCALE MONITOR. 1" FLEXIBLE CONDUIT DOWN TO FLOOR ASSEMBLY AND WALL ENCLOSURE PROVIDED WITH SCALE. ELECTRICAL TO INSTALL AND PROVIDE CIRCUITRY AS SHOWN TO THE UNDERSIDE OF WALL ENCLOSURE. PROVIDE 18" PIGTAIL AND CONNECT AS REQUIRED.
9. MOTOR RATED TOGGLE SWITCH FOR WATER HEATER REGR. PUMP.
10. 1/2" T-Bar IN WALL FOR GAS WATER HEATER CONTROLS. COORDINATE LOCATION WITH WATER HEATER.
11. PATIENT CARE AREA.
12. MOTOR RATED TOGGLE SWITCH FOR A 120V VAC 100VA CONTROL TRANSFORMER HIGH ON WALL WITH CONNECTION TO THE FILTER INSULATION SYSTEM PRIOR TO MECHANICAL. PROVIDE TO CONTROL WIRING REQUIRED TO THE PRESSURE SWITCH AND INDICATOR SYSTEM AT THE MURSE STATION.
13. 300A ASSEYTY FUSERS FOR TENANT SIGNAGE - SIGN DISCONNECT PROVIDED BY SIGN CONTRACTOR.
14. ALL POWER DEVICES THIS ROOM (DOES NOT INCLUDE LIGHTING SWITCHES) TO BE SURFACE MOUNTED WITH WP BORGES AND COVER.
15. REFER TO PANEL SCHEDULE AND DETAIL W-01 FOR FIRE ALARM SQUINTER CONTROL OF TREATMENT ROOM DOOR OPERATOR.
16. WALL HEATER, 240V, 1/2, 2KW. FEED WITH 2 #12, #12 GROUND, 3/4" CONDUIT.

EQUIPMENT SCHEDULE									
TAG	DESCRIPTION	KW	HP	F.L.A.	VOL. 1/0	WIRE CONDUIT	CONN.	MOUNT	DISC. SW. WITH RK FUSES PER RESIST. REFER TO PANEL SCHEDULE
CU-1A3	CONDENSING UNIT	27.7	289V-1/0	2.85	#10 GND, 3/4"			AT UNIT	30A 3P 2F WP
CU-1A4	CONDENSING UNIT	16.6	289V-1/0	1.74	#10 GND, 3/4"			AT UNIT	30A 3P 2F WP
CU-1A5	CONDENSING UNIT	23.1	289V-1/0	2.48	#10 GND, 3/4"			AT UNIT	30A 3P 2F WP
CU-1A7	CONDENSING UNIT	16.2	289V-1/0	1.74	#10 GND, 3/4"			AT UNIT	30A 3P 2F WP
FQ-1A4	FAN COIL UNIT	6.0	289V-1/0	2.812	#12 GND, 3/4"			AT UNIT	30A 3P 2F
FQ-1A5	FAN COIL UNIT	4.1	289V-1/0	2.812	#12 GND, 3/4"			AT UNIT	30A 3P 2F
FQ-1A6	FAN COIL UNIT	6.0	289V-1/0	2.812	#12 GND, 3/4"			AT UNIT	30A 3P 2F
FQ-1A7	FAN COIL UNIT	2.8	289V-1/0	2.812	#12 GND, 3/4"			AT UNIT	30A 3P 2F
EF-1	EXHAUST FAN	12	9.6	120V-1/0	2.812	#12 GND, 3/4"		AT UNIT	30A 3P 1F WP
EF-2	EXHAUST FAN	18	3.0	120V-1/0	2.812	#12 GND, 3/4"		AT UNIT	30A 3P 1F
EF-3	EXHAUST FAN	110	1.6	120V-1/0	2.812	#12 GND, 3/4"		AT UNIT	30A 3P 1F
BF-1A	BOOSTER FAN	1.0	4.8	289V-2/0	3/4"	#12 GND, 3/4"		AT UNIT	COMBO 30A 3P, 3F DISC SW. W/ NEMA SIZE 0 PUMP STARTER



PAGONE + ASSOCIATES
architects
13627 S. 32nd PLACE
PHOENIX ARIZONA 85044
TEL: 602.966.4838 FAX: 602.966.4838
map@pagoneassoc.com

Proposed Tenant Improvement for:
SAN JUAN CAPISTRANO JV
5804
31001 RANCHO VIEJO ROAD
SAN JUAN CAPISTRANO, CA 92675

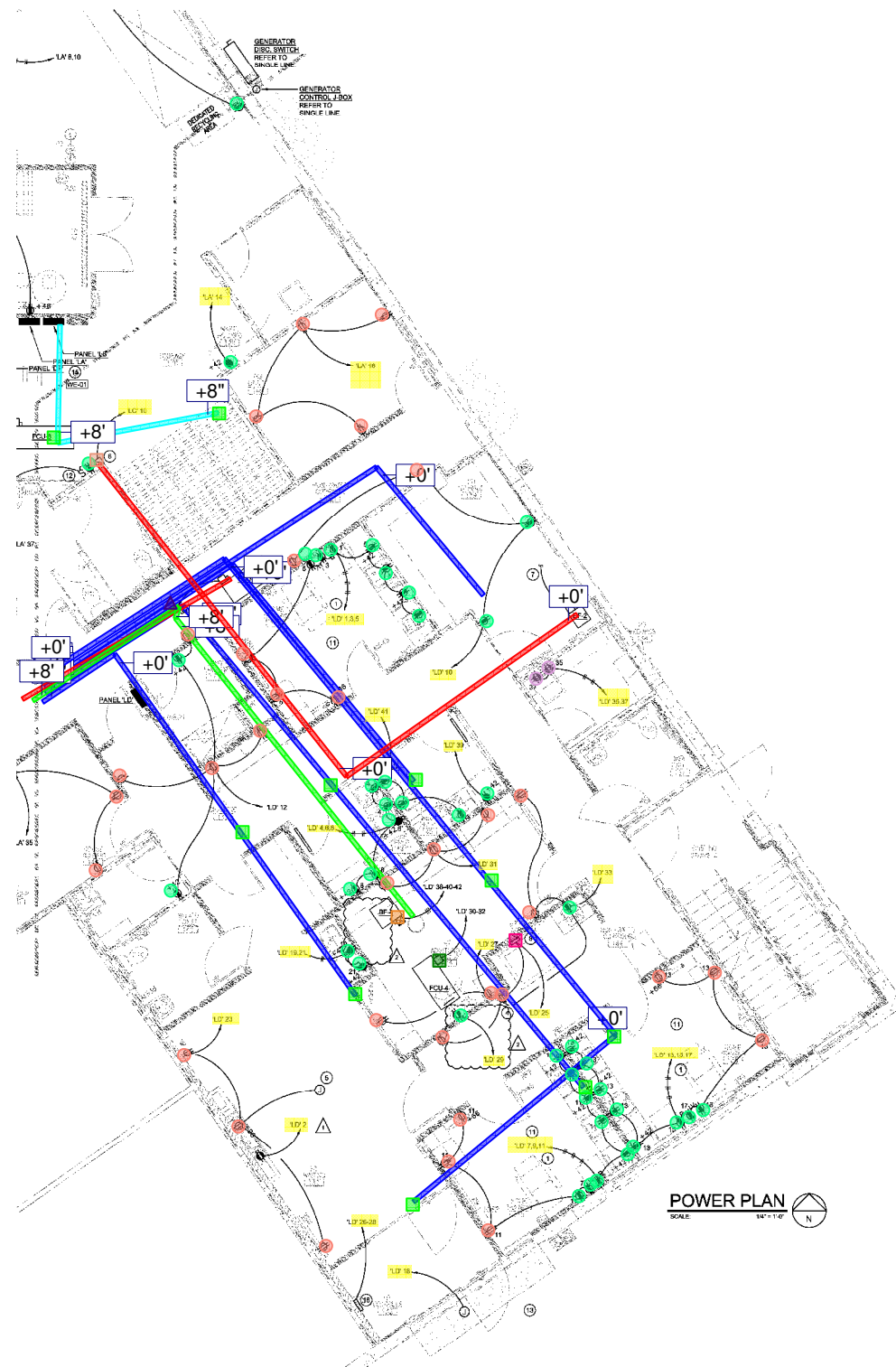


DRAWN: SAL
MANAGER: DCW
REVIEWED: DCW
PROJECT: 16023
DATE: 7.22.16
REVISION:

VE 16028
E 2.1a
Power Plan

WOODWARD ENGINEERING
203 SOUTH SMITH ROAD • SUITE 101 • TEMPE, AZ 85281
1.800.868.1777 • 480.949.0011 • www.woodward-engineering.com

- 6-circuit 3/4" #12 T-BAR - 279 LF
- 44 - 3 Inspace - 1 EA
- 45 - GF1 DUPLEX - 43 EA
- 46 - DUPLEX #12 - 33 EA
- 48 - QUAD - 2 EA
- 52 - FAN COIL 20A - 1 EA
- 53 - BF 1-4 - 1 EA
- 56 - 3-circuit 1" #10 T-BAR - 31 LF
- 57 - 3-circuit 1" #10 T-BAR 5S J-BOX - 2 EA
- 58 - 6-circuit 5S J-BOX - 8 EA
- 61 - 3/4" #8 1/10 T-BAR - 70 LF
- 62 - floor scale - 1 EA
- 65 - 3/4" #8 1/10 - 19 LF
- 66 - 1/2" #12 - 55 LF
- 67 - TIME CLOCK NOTE - 1 EA



ELECTRICAL SYMBOLS LIST

- NOTE: DIMENSIONS TO CENTERLINES. COORDINATE ALL INSTALLATIONS.
- DETAIL KEY REFER TO STANDARD DETAILS
 - DUPLEX RECEPTACLE - 1" A.F.F.
 - DUPLEX RECEPTACLE - HEIGHT A.F.F. INDICATED
 - QUAD RECEPTACLE - 1" A.F.F.
 - QUAD RECEPTACLE - DEDICATED
 - DUPLEX RECEPTACLE - GF1
 - DUPLEX RECEPTACLE - DEDICATED
 - DUPLEX RECEPTACLE - DEDICATED GF1
 - DUPLEX RECEPTACLE - HOSPITAL GRADE GF1 (DEDICATED) - BROWN
 - DUPLEX RECEPTACLE - HOSPITAL GRADE GF1 (SHARED) - WHITE
 - FLOOR IN FLOOR POWER TELEPHONE/DATA STATION WITH RECESSED ACTIVATION. PROVIDE WITH DUPLEX RECEPTACLE. PROVIDE 3/4" CONDUIT FROM POWER SECTION TO T.M.E.
 - DISCONNECT SWITCH WITH RATING AS SHOWN ON PLANS
 - BRANCH CIRCUITRY CONCEALED IN WALL OR CEILING
 - BRANCH CIRCUITRY ROUTED UNDERGROUND
 - BRANCH CIRCUITRY HIDDEN TO PANEL, AS NOTED ON PLANS
 - JUNCTION BOX
 - DUPLEX CONVENIENCE OUTLET; SPLIT WIRED, WITH THE BAR REMOVED; 120V, 20A, WTD, @ 1" A.F.F. UNCL.

- NOTE:** FUSES SHALL BE PROVIDED WITH REJECTION TYPE FUSE HOLDERS.
- NO FIPING:** DUCTS OR EQUIPMENT FORBIDDEN TO ELECTRICAL EQUIPMENT SHALL BE PERMITTED TO BE LOCATED WITHIN THE DEDICATED SPACE ABOVE THE ELECTRICAL EQUIPMENT, (PANELS, TRANSFORMERS, ETC.)
- NOTE:** ALL MULTIWIRE BRANCH CIRCUITS TO HAVE SEPARATE NEUTRALS OR CIRCUIT BREAKER HANDLES TO MEET THE REQUIREMENTS OF NEC/CEC (WHEN IN CALIFORNIA).
- CONTRACTOR TO FIELD VERIFY CAPS; HOME HMO TV AND PATIENT SERVICES LOCATIONS WITH EFC FROM PRIOR TO RUSH-IN.
- ALL BRANCH CIRCUITRY TO PATIENT CARE AREAS (EXAM, TREATMENT AREAS, ETC.) TO BE PROVIDED WITH INSULATED COPPER GROUNDING CONDUCTORS, AND ROUTED IN METALLIC CONDUIT.**
- OTHER THAN EMERGENCY LIGHTING:** EMERGENCY POWER IS NOT REQUIRED THIS CLINIC. THE PATIENTS ARE TRAINED TO REMOVE THEMSELVES FROM THE HEMO-DIALYSIS EQUIPMENT UPON LOSS OF POWER, AND CLINIC ADMITTANCE POLICIES DO NOT ALLOW PATIENTS RECEIVING LIFE SUPPORT.
- TYPE MC AND AC CABLE SHALL NOT BE USED THIS PROJECT.**

- POWER PLAN KEYED NOTES:**
1. SWING CIRCUIT TO BE #10 GND. DEDICATED HOTS AND NEUTRALS, 1" CONDUIT. GROUNDING TO BE INSULATED.
 2. BOOSTER / DIST. PUMP: 230V, 1/2 HP. PROVIDE 3/4", 2P, 2P, DISCONNECT SWITCH WITH FUSES PER MANUFACTURERS REQUIREMENTS. COORDINATE EXIST. LOCATION AROUND PIPING AND PUMP. FEED DISC. THROUGH 2 1/2" KVA BOOST TRANSFORMER LOCATED ABOVE DISC. SW. ACHE PT. 1-81550 OR EQUAL. BRANCH CIRCUIT ORIGINATES AT PANELBOARD, ROUTED THROUGH DISC. SW. TO TRANSFORMER AND TO RECEPTACLE THROUGH RECEPTACLE FOR VFD CONNECTION. COORDINATE WITH MECHANICAL CONTRACTOR.
 3. N.O. SYSTEM 120059V, 30 1/2 HP, 2 HP. PROVIDE 80A 3P 3W DISC SWITCH WITH 42A, 1R1 FUSES AT 7' AFF. TO CENTER VERBLY SLOUGH-IN LOCATION ABOVE R.C. MACHINE. FEED WITH #4, #10 GROUND, 1" CONDUIT. PROVIDE LIQUID TIGHT FLEX TO UNIT.
 4. DUPLEX RECEPTACLE IN WALL AT APPROX. 4' 6" AFF. TO CENTER. COORDINATE LOCATION BEHIND WALL-MOUNTED CHECK-IN STATION PRIOR TO RUSH-IN.
 5. 2 #12, #12 GND, 1/2" CONDUIT TO INTERCOM AND NURSE CALL POWER SUPPLIES. REFER TO COMMUNICATIONS PLANS FOR COOR. OPERATOR J-BOX LOCATIONS.
 6. TIMELOCK CONTROL LOCATION FOR EXHAUST FAN CONTROL. 120V, 1/2 HP, TORQ #7300, DR EQUAL (HORSE POWER RATED).
 7. ROUTE CIRCUIT THROUGH EXHAUST FAN TIMELOCK (KEYED NOTE #6).
 8. FLEXIBLE ENCLOSURE IN WALL AT 4' 6" AFF. TO CENTER FOR FLOOR SCALE MONITOR. 1" FLEXIBLE CONDUIT DOWN TO FLOOR ASSEMBLY AND WALL ENCLOSURE FINISHED WITH SCALE. ELECTRICIAN TO INSTALL AND PROVIDE CIRCUITRY AS SHOWN TO THE UNDERSIDE OF WALL ENCLOSURE. PROVIDE 1" PIGTAIL AND CONNECT AS REQUIRED.
 9. MOTOR RATED TOGGLE SWITCH FOR WATER HEATER HEATER. PUMP. LOC. J-BOX ON WALL FOR GAS WATER HEATER CONTROLS. COORDINATE LOCATION WITH WATER HEATER.
 10. PATIENT CARE AREA.
 11. MOTOR RATED TOGGLE SWITCH FOR A 1224 VAC, 100VA CONTROL TRANSFORMER HIGH ON WALL WITH CONNECTION TO THE FILTER INDICATOR SYSTEM SUBJECT TO MECHANICAL PROVIDER. CONTROL WIRING REQUIRED TO THE PRESSURE SWITCH AND INDICATOR SYSTEM AT THE NURSE STATION.
 12. J-BOX AT SIGNIFY FASCIA FOR TENANT SIGNAGE - SIGN DISCONNECT PROVIDED BY SIGN CONTRACTOR.
 13. ALL POWER DEVICES THIS ROOM (DOES NOT INCLUDE LIGHTING SWITCHES) TO BE SURFACE MOUNTED WITH WP BOXES AND COVERS.
 14. REFER TO PANEL SCHEDULE AND DETAIL WEDI FOR FIRE ALARM SHUNT TRIP CONTROL OF TREATMENT ROOM DOOR OPERATOR.
 15. WALL HEATER: 240V, 1/2, 20W. FEED WITH 2 #12, #12 GROUND, 3/4" CONDUIT.

EQUIPMENT SCHEDULE									
TAG	DESCRIPTION	HW	H.F.	FLA	VOL. STD	WIRE, CONDUIT	CONN.	MOUNT	DISC. SW. WITH R1 FUSES PER REQUIREMENTS
CUJ-14-B	CONSENSING UNIT	27.7	208V-1Ø	2 #8, #10 GND, 3/4" C.		AT UNIT	30A, 2P, 2E, WP		
CUJ-5	CONSENSING UNIT	18.0	208V-1Ø	2 #8, #10 GND, 3/4" C.		AT UNIT	30A, 2P, 2E, WP		
CUJ-8	CONSENSING UNIT	25.1	208V-1Ø	2 #8, #10 GND, 3/4" C.		AT UNIT	30A, 2P, 2E, WP		
CUJ-7	CONSENSING UNIT	18.2	208V-1Ø	2 #8, #10 GND, 3/4" C.		AT UNIT	30A, 2P, 2E, WP		
FCU-14-B	FAN COIL UNIT	6.0	208V-1Ø	2 #12, #12 GND, 3/4" C.		AT UNIT	30A, 2P, 2E,		
FCU-5	FAN COIL UNIT	4.1	208V-1Ø	2 #12, #12 GND, 3/4" C.		AT UNIT	30A, 2P, 2E,		
FCU-8	FAN COIL UNIT	6.0	208V-1Ø	2 #12, #12 GND, 3/4" C.		AT UNIT	30A, 2P, 2E,		
FCU-7	FAN COIL UNIT	2.8	208V-1Ø	2 #12, #12 GND, 3/4" C.		AT UNIT	30A, 2P, 2E,		
EF-1	EXHAUST FAN	102	9.8	120V-1Ø	2 #12, #12 GND, 3/4" C.	AT UNIT	30A, 2P-1F, WP		
EF-2	EXHAUST FAN	116	3.0	120V-1Ø	2 #12, #12 GND, 3/4" C.	AT UNIT	30A, 2P-1F,		
EF-3	EXHAUST FAN	170	1.8	120V-1Ø	2 #12, #12 GND, 3/4" C.	AT UNIT	30A, 2P-1F,		
BF-14	BOOSTER FAN	1.0	4.8	208V-3Ø	3 #12, #12 GND, 3/4" C.	AT UNIT	COMBO 30A, 3P, 3F DISC. SW. W/ NEUMA SEC 10 PUMP STARTER		

STARTERS TO HAVE 24VAC COIL FOR CONTROL FROM ASSOCIATED FCU (COORDINATE CONTROL AND CONTROL WIRING WITH EQUIPMENT).

WE # 16028

WOODWARD ENGINEERING

303 SOUTH SMITH ROAD • SUITE 101 • TEMPE, AZ 85281
480.946.4887 • 480.946.1001 • info@woodward-engineering.com



PAGONE + ASSOCIATES
architects
13627 S. 32nd PLACE
PHOENIX, ARIZONA 85044
TELEPHONE 480.814.8100
map@pagoneassoc.com

Proposed Tenant Improvement for:
SAN JUAN CAPISTRANO JV
5804
31001 RANCHO VIEJO ROAD
SAN JUAN CAPISTRANO, CA 92675



DRAWN: SAL
MANAGER: DCW
REVIEWED: DCW
PROJECT: 16003
DATE: 10.21.16
REVISION:
CITY JOCCA 10.21.16
COORDINATION 10.24.16

E 2.1b
Power Plan

ELECTRICAL SYMBOLS LIST

NOTE: DIMENSIONS TO CENTERLINE, COORDINATE ALL INSTALLATIONS

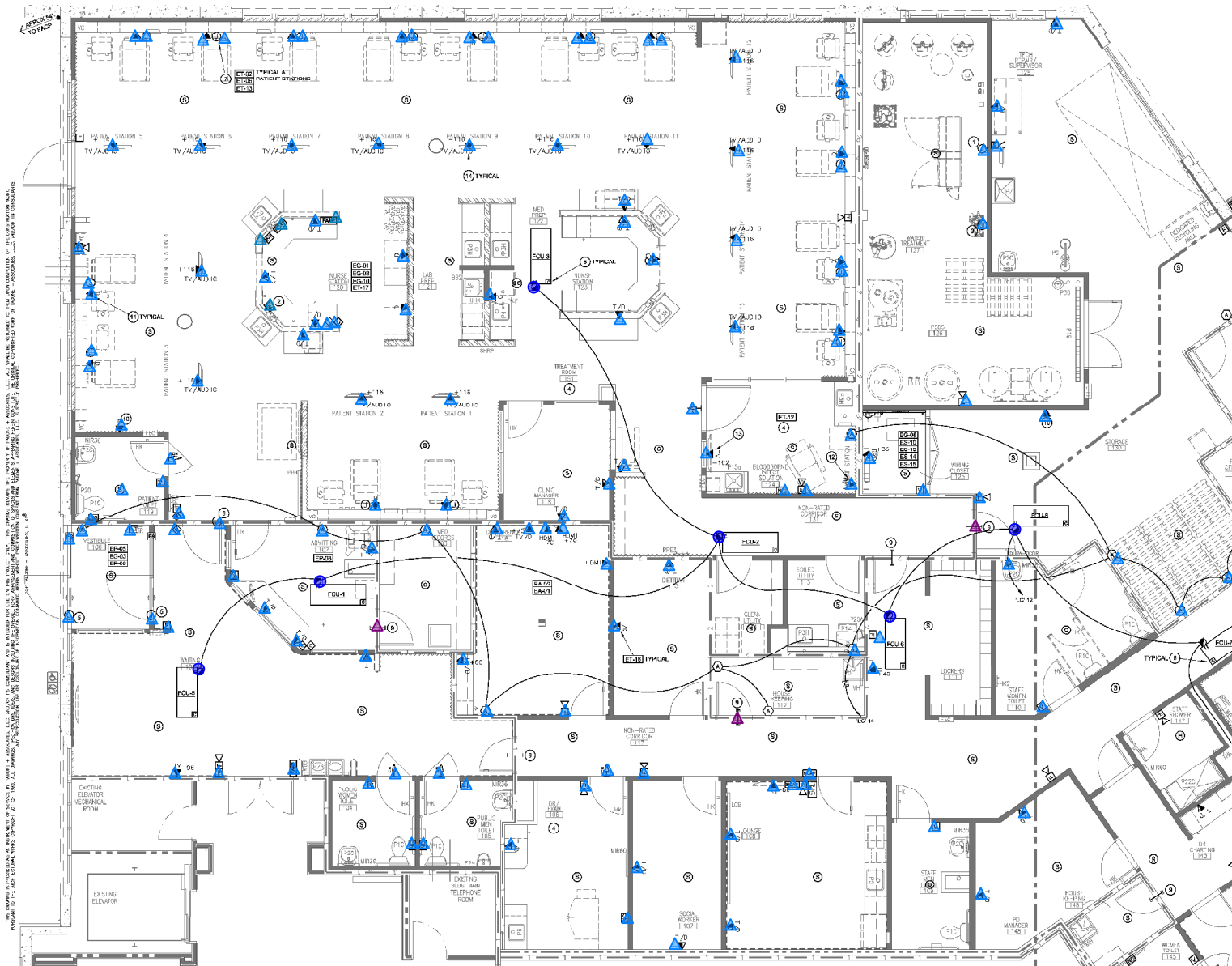
- FLUSH IN FLOOR POWER/TELEPHONE/DATA STATION WITH RECESSED ACTIVATION. PROVIDE WITH DUPLEX PROTECTIVE PLATE. PROVIDE 4" SANI-MAT FLOOR ISOLATION SECTION TO LOW HDMI JACK.
- BRANCH CIRCUITRY CONCEALED IN WALL OR CEILING.
- BRANCH CIRCUITRY ROUTED UNDERGROUND.
- BRANCH CIRCUITRY POWER RUN TO PANEL AS NOTED ON PLANS.
- DATA/DATA CABLE OUTLET 18" A.F.F. (UNLESS OTHERWISE NOTED)
- PHONE/DATA OUTLET 18" A.F.F. (UNLESS OTHERWISE NOTED)
- PHONE OUTLET 18" A.F.F. (UNLESS OTHERWISE NOTED)
- FAX OUTLET 18" A.F.F. (UNLESS OTHERWISE NOTED)
- INTERCOM OUTLET
- DOOR OPERATOR BUTTON 48" A.F.F.
- ELECTRIC DOOR STRIKE
- PUSH BUTTON TO RELEASE ELEC. DOOR STRIKE
- SMALL POLY-RED JEWEL LIGHT SWITCH
- JUNCTION BOX
- NURSE CALL STATION 48" A.F.F.
- NURSE CALL ANNUNCIATOR PANEL
- NURSE CALL DOME LIGHT FIXTURE (WALL MOUNT) 96" A.F.F.
- FIRE ALARM ANNUNCIATOR PANEL
- FIRE ALARM CONTROL PANEL
- FIRE ALARM PULL STATION
- SMOKE DETECTOR
- CARBON MONOXIDE MONITOR
- VISUAL EMERGENCY SIRE ALARM
- AUDIO VISUAL EMERGENCY ALARM
- FIRE ALARM CONTROL RELAY
- TAMPER SWITCH AT FIRE SPRINKLER RISER
- PHOTO MOUNTED PHOTO ELECTRIC SMOKE DETECTOR
- SMOKE/HEAT DAMPER MOTOR ACTUATOR

SPECIAL SYSTEM PLAN GENERAL NOTES:


1. REFER TO MECHANICAL DRAWINGS FOR PRECISE LOCATIONS OF ALL MECHANICAL UNITS.
2. DEMO ALL EXISTING ELECTRICAL FROM SUITE U.O.
- NOTE:
ALL TRUNK BRANCH CIRCUITS TO HAVE SEPARATE NEUTRALS OR CIRCUIT BREAKER HANDLE TIES TO MEET THE REQUIREMENTS OF THE NEC/CEC (WHEN IN CALIFORNIA).
- NO FINING DEMOS OR EQUIPMENT FOREIGN TO ELECTRICAL EQUIPMENT SHALL BE PERMITTED TO BE LOCATED WITHIN THE DESIGNATED SPACES ALLOCATED FOR THE ELECTRICAL EQUIPMENT (PANELS, TRANSFORMERS, ETC.)
- CONTRACTOR TO FIELD VERIFY CAPD/HOME HEAVY TV AND PATIENT SERVICE LOCATIONS WITH FMC PM PRIOR TO PROCEED.
- CONTRACTOR TO PROVIDE, INSTALL, AND TERMINATE ALL PHONE, DATA, AND TV/FAX CABLES REQUIRED FOR THE PROJECT PER SPECIFICATION SECTION 16700.
- ELECTRIC DOOR STRIKE
- SMOKE POWER DEVICES SHOWN THIS PLAN FOR REFERENCE ONLY TO BE USED FOR PLACEMENT OF TRIGGERS. SHOW THE PLAN. REFER TO POWER PLANS, ESX SERIES SHEETS, FOR CIRCUITRY.
- TYPE8 MC AND AC CABLE SHALL NOT BE USED THIS PROJECT.
- SMOKE / HEAT DETECTORS TO BE LOCATED MORE THAN 3' AWAY FROM ALL SUPPLY / RETURN DIFFUSERS.

COMMUNICATIONS PLAN KEYED NOTES:

1. 18-GANG FLUSH J-BOX WITH COVER AT 48" AFF ABOVE THE R.O. UNIT. PROVIDE 3/4" CONDUIT WITH R.O. CABLE TO THE R.O. MONITOR J-BOX AT NURSE STATION. PROVIDE 1/2" WHIP THIS END.
2. 2-GANG J-BOX IN WALL FOR THE R.O. AND D.O. MONITOR. PROVIDE 3/4" CONDUIT TO R.O. J-BOX (REFER NOTE #1). PROVIDE 1/2" WHIP THIS END.
3. SMOKE/HEAT J-BOX IN WALL FOR R.O. MONITOR. PROVIDE 3/4" CONDUIT WITH D.O. CABLE TO THE R.O. J-BOX (REFER NOTE #1). WIRING PROVIDED BY MANDORC, INSTALLED BY CONTRACTOR. PROVIDE 1/2" WHIP THIS END.
4. PATIENT CARE AREA.
5. J-BOX WITH FLEX CONNECTION TO MAIN ENTRANCE FOR OPERATOR AND CONTROL TRANSFORMER FOR THE ELECTRIC STRIKE ROUTE CIRCUIT FROM ISOLATION PER DETAIL. EXTEND TRAY CIRCUIT FROM CEILING J-BOX AT WAITING. REFER TO POWER PLANS, E.S.A. SERIES SHEETS.
6. J-BOX WITH FLEX CONNECTION FOR 12" (10" MIN) JACK UPHOLE AND CONTROL TRANSFORMER FOR THE ELECTRIC STRIKE ROUTE CIRCUIT THROUGH SHUNT TRIP CIRCUIT BREAKER CONTROLLED FROM THE FIRE ALARM CONTROL RELAY.
7. 18-GANG J-BOX FOR PATIENT STATION ALERD JACK. PROVIDE AUDIO CABLE FROM 20FT IT INCL. COAX BOX TO J-BOX IN DIALYSIS COUNTER. PROVIDE 1/2" WHIP EACH END.
8. ADDRESSABLE FIRE ALARM CONTROL MODULE FOR HVAC UNIT SHUT-DOWN.
9. PROVIDE (2) 2" CONDUIT SLEEVES WITH BUSHED ENDS THROUGH FIRE RATED WALL AT APPROX. 12" ABOVE CEILING (UNLESS NOTED OTHERWISE. VERIFY WITH FMC PM AT PROJECT PRECON).
10. DATA JACK AT 12" AFF. COW/CHIRING FOR WIRELESS LAN NETWORK CONNECTION. COORDINATE LOCATION WITH WITH FMC PM AT PROJECT PRECON.
11. COAX CAT SE JACK FOR PATIENT STATION. PROVIDE 1" CONDUIT UP INTO FSI RM FOR DATA/COAX AT ISLAND LOCATIONS. PROVIDE 2" CONDUIT FROM MAIN/WORKER ENDS INTO CEILING FROM J-BOX TO SUPPORT CABLES PER MFR'S REQUIREMENTS.
12. CAT SE JACK FOR PATIENT CHAIRS/SERVICES AT ISOLATION/PHONE/HEMO. PROVIDE 1" CONDUIT FROM DATA J-BOX UP INTO CEILING.
13. COAX JACK FOR PATIENT TV SERVICES AT ISOLATION / CAPD / HOME HEMO. PROVIDE 1" CONDUIT FROM DATA J-BOX UP INTO CEILING.
14. ANTENNA JACK IN ROOM 1107H (107H) 1V. PROVIDE (2) COAX CABLE FROM JACK TO EQUIPMENT RACK IN THE WIRING CLOSET. COORDINATE LOCATION PRIOR TO INSTALL.



COMMUNICATIONS PLAN
 SCALE: 1/8" = 1'-0"




PAGONE + ASSOCIATES
 architects
 13627 S. 32nd PLACE
 PHOENIX ARIZONA 85044
 TEL: 480.814.6100
 map@pagoneassoc.com

Proposed Tenant Improvement for:

SAN JUAN CAPISTRANO JV

5804
 31001 RANCHO VIEJO ROAD
 SAN JUAN CAPISTRANO, CA 92675



**FRESENIUS
 MEDICAL CARE**

DRAWN:	SAL
MANAGER:	DCW
REVIEWED:	DCW
PROJECT:	16023
DATE:	7.22.16
REVISION:	

WE # 16028

WOODWARD ENGINEERING

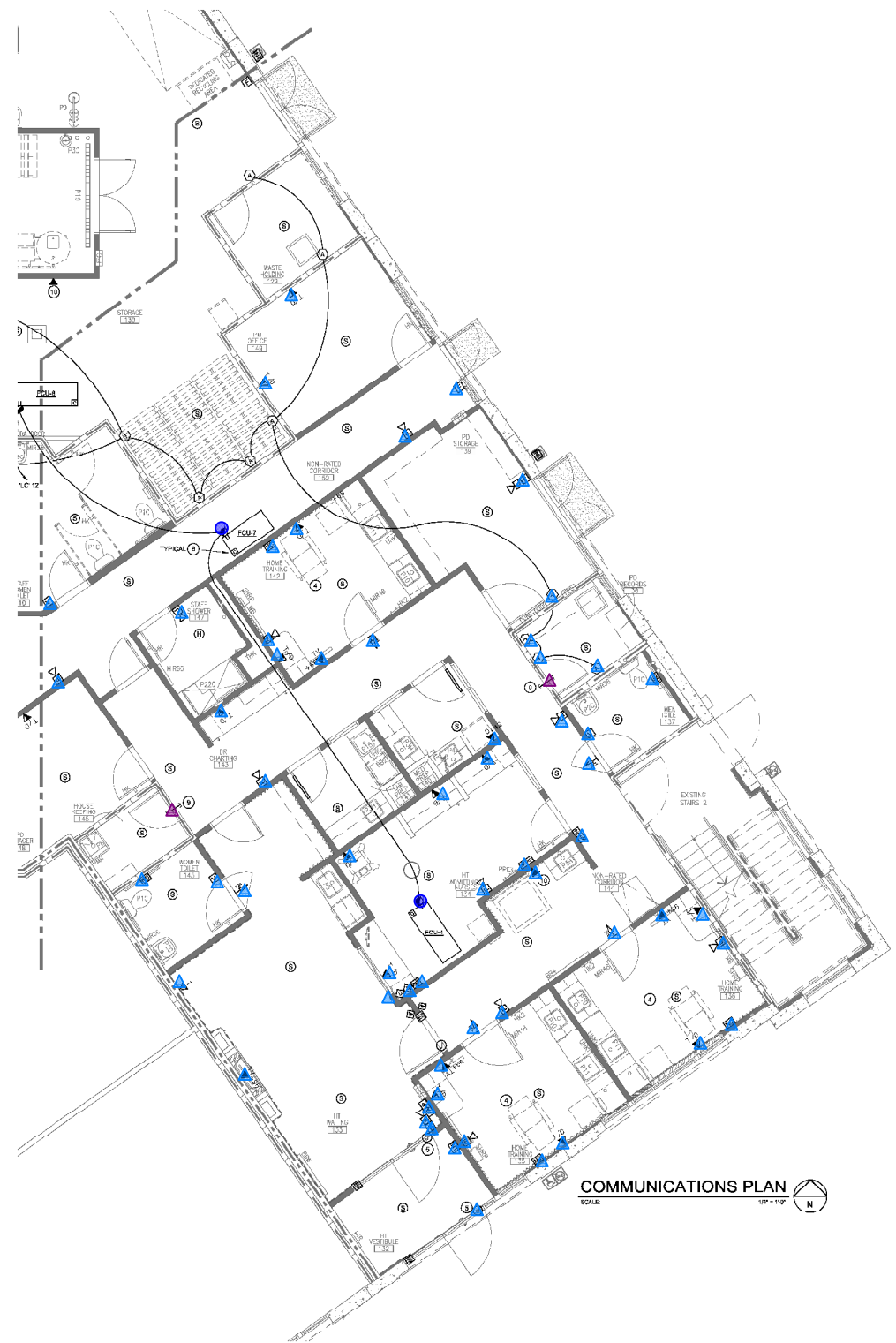
203 SOUTH SMITH ROAD • SUITE 101 • TEMPE, AZ 85281
 1.480.968.1777 • 1.480.949.0031 • www.woodward-engineering.com

E

2.2a

Comm. Plan

ALL WORK SHALL BE IN ACCORDANCE WITH THE 2017 NATIONAL ELECTRICAL CODE (NEC) AND THE 2017 CALIFORNIA ELECTRICAL CODE (CEC). THE CONTRACTOR SHALL BE RESPONSIBLE FOR OBTAINING ALL NECESSARY PERMITS AND APPROVALS FROM THE LOCAL JURISDICTION. THE CONTRACTOR SHALL BE RESPONSIBLE FOR OBTAINING ALL NECESSARY PERMITS AND APPROVALS FROM THE LOCAL JURISDICTION. THE CONTRACTOR SHALL BE RESPONSIBLE FOR OBTAINING ALL NECESSARY PERMITS AND APPROVALS FROM THE LOCAL JURISDICTION.



COMMUNICATIONS PLAN
 SCALE: 1/8" = 1'-0"

ELECTRICAL SYMBOLS LIST

NOTE: DIMENSIONS TO CENTERLINE, COORDINATE ALL INSTALLATIONS

- Ⓢ DETAIL KEY REFER TO STANDARD DETAILS
- Ⓢ FLUSH IN FLOOR POWER/TELEPHONE/DATA STATION WITH RECESSED ACTIVATION. PROVIDE WITH DUPLEX PROTECTIVE PLATE. PROVIDE A SANITARY FLOOR ISOLATION SECTION TO LOW HDMI JACK.
- Ⓢ BRANCH CIRCUITRY CONCEALED IN WALL OR CEILING.
- Ⓢ BRANCH CIRCUITRY ROUTED UNDERGROUND
- Ⓢ BRANCH CIRCUITRY POWER/IN TO PANEL AS NOTED ON PLANS
- Ⓢ DATA/DATA CABLE OUTLET 18" A.F.F. (UNLESS OTHERWISE NOTED)
- Ⓢ PHONE/DATA OUTLET 18" A.F.F. (UNLESS OTHERWISE NOTED)
- Ⓢ PHONE OUTLET 12" A.F.F. (UNLESS OTHERWISE NOTED)
- Ⓢ FAX OUTLET 18" A.F.F. (UNLESS OTHERWISE NOTED)
- Ⓢ INTERCOM OUTLET
- Ⓢ DOOR OPERATOR BUTTON 48" A.F.F.
- Ⓢ ELECTRIC DOOR STRIKE
- Ⓢ PUSH BUTTON TO RELEASE ELEC. DOOR STRIKE
- Ⓢ SINGLE POLE RED JEWEL PILOT LIGHT SWITCH
- Ⓢ JUNCTION BOX
- Ⓢ NURSE CALL STATION 48" A.F.F.
- Ⓢ NURSE CALL ANNUNCIATOR PANEL
- Ⓢ NURSE CALL DOME LIGHT FIXTURE (WALL MOUNT) 96" A.F.F.
- Ⓢ FIRE ALARM ANNUNCIATOR PANEL
- Ⓢ FIRE ALARM CONTROL PANEL
- Ⓢ FIRE ALARM PULL STATION
- Ⓢ SMOKE DETECTOR
- Ⓢ CARBON MONOXIDE MONITOR
- Ⓢ VISUAL EMERGENCY SIRE ALARM
- Ⓢ AUDIO VISUAL EMERGENCY ALARM
- Ⓢ FIRE ALARM CONTROL RELAY
- Ⓢ WATER FLOW SWITCH AT FIRE SPRINKLER RISER
- Ⓢ TAMPER SWITCH AT FIRE SPRINKLER RISER
- Ⓢ DUCT MOUNTED PHOTO-ELECTRIC SMOKE DETECTOR
- Ⓢ RATE OF RISE HEAT DETECTOR
- Ⓢ SMOKE/FIRE DAMPER MOTOR ACTUATOR

SPECIAL SYSTEM PLAN GENERAL NOTES:

1. REFER TO MECHANICAL DRAWINGS FOR PRECISE LOCATIONS AND LOCATIONS WITH FURNITURE PLANS, OWNER, ETC.
 2. REFER TO MECHANICAL DRAWINGS FOR PRECISE LOCATIONS OF ALL MECHANICAL UNITS.
 3. DEMO ALL EXISTING ELECTRICAL FROM SUITE U.O.
- NOTE:
 ALL MULTIPLE BRANCH CIRCUITS TO HAVE SEPARATE NEUTRALS OR CIRCUIT BREAKER HANDLE TIES TO MEET THE REQUIREMENTS OF THE NEC / CEC (WHEN IN CALIFORNIA)
- NO FINISH DECKS OR EQUIPMENT FOREIGN TO ELECTRICAL EQUIPMENT SHALL BE PERMITTED TO BE LOCATED WITHIN THE DESIGNATED SPACES ABOVE THE ELECTRICAL EQUIPMENT (PANELS, TRANSFORMERS, ETC.)
- CONTRACTOR TO FIELD VERIFY CAPD / HOME HEAD TV AND PATIENT SERVICES LOCATIONS WITH FMC PM PRIOR TO PROCEEDING.
- CONTRACTOR TO PROVIDE, INSTALL, AND TERMINATE ALL PHONE, DATA, AND TV CABLES AND REQUIRED FOR THE PROJECT PER SPECIFICATION SECTION 16730.
- SMOKE POWER DEVICES SHOWN THIS PLAN FOR REFERENCE ONLY TO BE USED FOR PLACEMENT OF TELEPHONE DEVICES SHOWN THIS PLAN. REFER TO POWER PLANS, ES X SERIES SHEETS, FOR CIRCUITRY.
- TYPE B MC AND AC CABLE SHALL NOT BE USED THIS PROJECT.
- SMOKE / HEAT DETECTORS TO BE LOCATED MORE THAN 8' AWAY FROM ALL SUPPLY / RETURN DIFFUSERS.

COMMUNICATIONS PLAN KEYED NOTES:

1. 1-GANG FLUSH J-BOX WITH COVER AT 48" AFF ABOVE THE R.O. UNIT. PROVIDE 3/4" CONDUIT WITH R.O. CABLE TO THE R.O. MONITOR J-BOX AT NURSE STATION. PROVIDE 1/2" WHIP THIS END.
2. 2-GANG J-BOX IN WALL FOR THE R.O. AND D.L. MONITOR. PROVIDE 3/4" CONDUIT TO R.O. JACK (REFER NOTE #1). PROVIDE 1/2" WHIP THIS END.
3. SMOKE SENSORS J-BOX IN WALL FOR E.I. MONITOR. PROVIDE 3/4" CONDUIT WITH D.L. CABLE TO THE R.O. J-BOX (REFER NOTE #1). WIRING PROVIDED BY MANOR, INSTALLED BY CONTRACTOR. PROVIDE 1/2" WHIP THIS END.
4. PATIENT CARE AREA.
5. J-BOX WITH F.I.X CONNECTION TO MAIN ENTRANCE DOOR OPERATOR AND CONTROL TRANSFORMER FOR THE ELECTRIC STRIKE ROUTE CIRCUIT THRU SHUNT TRIP CIRCUIT BREAKER CONTROLLED FROM THE FIRE ALARM CONTROL RELAY.
6. J-BOX WITH F.I.X CONNECTION TO R.O. (HDMI) JACK UPHOLE AND CONTROL TRANSFORMER FOR THE ELECTRIC STRIKE ROUTE CIRCUIT THRU SHUNT TRIP CIRCUIT BREAKER CONTROLLED FROM THE FIRE ALARM CONTROL RELAY.
7. 1-GANG J-BOX FOR PATIENT STATION ALERT JACK. PROVIDE AUDIO CABLE FROM 20PFT ISOLATED COAX BOX TO J-BOX IN DIALYSIS COUNTER. PROVIDE 3/4" WHIP EACH END.
8. ADDRESSABLE FIRE ALARM CONTROL MODULE FOR HVAC UNIT SHUT-DOWN.
9. PROVIDE (2) 2" CONDUIT SLEEVES WITH BUSHED ENDS THROUGH FIRE RATED WALL AT APPROX. 12" ABOVE CEILING (UNLESS NOTED OTHERWISE. VERIFY WITH FMC PM AT PROJECT PRE-CON.
10. DATA JACK AT 12" AFF OVERHUNG FOR WIRELESS LAN NETWORK CONNECTION. COORDINATE LOCATION WITH WITH FMC PM AT PROJECT PRE-CON.
11. COAXIAL SE JACK FOR PATIENT STATION. PROVIDE 1" CONDUIT UP INTO RFI INF FOR DATA/COAX (AT ISLAND LOCATIONS, PROVIDE 2" CONDUIT FROM MAIN WORK AREAS INTO CEILING FROM DATA/COAX SUPPORT CABLES PER MFR'S REQUIREMENTS.
12. CAT 6E JACK FOR PATIENT CHAIRSIDE SERVICES AT ISOLATION/CD HOME HEAD. PROVIDE 1" CONDUIT FROM DATA J-BOX UP INTO CEILING.
13. COAX JACK FOR PATIENT TV SERVICES AT ISOLATION / CAPD / HOME HEAD. PROVIDE 1" CONDUIT FROM DATA J-BOX UP INTO CEILING.
14. ANTENNA JACK IN ROOM 104 PA 104 1 V. PROVIDE (3) COAX CABLE FROM JACK TO EQUIPMENT RACK IN THE WIRING CLOSET. COORDINATE LOCATION PRIOR TO R.O. IN.



PAGONE + ASSOCIATES
 architects
 13627 S. 32nd PLACE
 PHOENIX ARIZONA 85044
 TEL: 480.814.6100
 map@pagoneassoc.com

Proposed Tenant Improvement for:
SAN JUAN CAPISTRANO JV
 5804
 31001 RANCHO VIEJO ROAD
 SAN JUAN CAPISTRANO, CA 92675

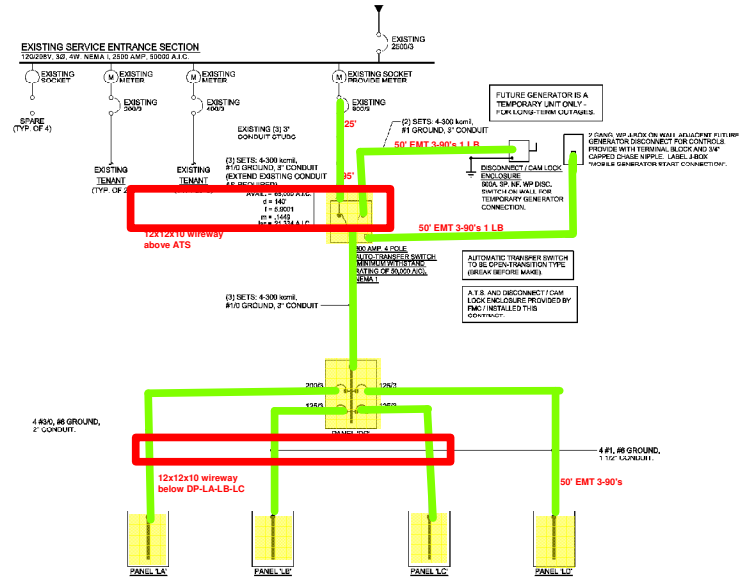


DRAWN: SAL
 MANAGER: DCW
 REVIEWED: JOW
 PROJECT: 16203
 DATE: 7.22.16
 REVISION:

E
2.2b
 Comm. Plan

WE # 16203
WOODWARD ENGINEERING
 203 SOUTH SMITH ROAD • SUITE 101 • TEMPE, AZ 85281
 1.800.969.7778 • 480.949.0033 • www.woodward-engineering.com

ALL RIGHTS RESERVED. NO PART OF THIS DRAWING IS TO BE REPRODUCED OR TRANSMITTED IN ANY FORM OR BY ANY MEANS, ELECTRONIC OR MECHANICAL, INCLUDING PHOTOCOPYING, RECORDING, OR BY ANY INFORMATION STORAGE AND RETRIEVAL SYSTEM. WITHOUT THE WRITTEN PERMISSION OF THE ARCHITECT. THE ARCHITECT'S OFFICE SHALL BE RESPONSIBLE FOR THE DESIGN AND CONSTRUCTION OF THE PROJECT. THE ARCHITECT'S OFFICE SHALL NOT BE RESPONSIBLE FOR THE DESIGN AND CONSTRUCTION OF THE PROJECT. THE ARCHITECT'S OFFICE SHALL NOT BE RESPONSIBLE FOR THE DESIGN AND CONSTRUCTION OF THE PROJECT.



SINGLE LINE DIAGRAM

SINGLE LINE DIAGRAM GENERAL NOTES:

- UNLESS NOTED, ON ALL TERMINATIONS RATED AT 75°C CONDUCTORS 100 AMPS AND LESS TO BE BASED ON THE 90°C AMPACITY OF THE CONDUCTOR, OVER 100 AMPS BASED ON THE 75°C AMPACITY OF THE CONDUCTOR.
- CONTRACTOR TO SUBMIT SERVICE ENTRANCE GEAR SHOP DRAWINGS TO SERVING UTILITY COMPANY FOR APPROVAL.
- COORDINATE AVAILABLE FAULT AT PANELS AND A.T.S. WITH AVAILABLE FAULT FROM SERVING UTILITY COMPANY. ADJUST A.C. RATINGS OF EQUIPMENT AS REQUIRED.

LOAD CALCULATIONS

EXISTING LOAD:	532.2 AMPS
ADDED LOAD BY PANELS:	440.0 AMPS
REVISED TOTAL LOAD:	972.2 AMPS

PAGONE + ASSOCIATES
architects
13627 S. 32nd PLACE
PHOENIX ARIZONA 85044
TELEPHONE 480.814.6100
map@pagoneassoc.com

Proposed Tenant Improvement for:
SAN JUAN CAPISTRANO JV
5804
31001 RANCHO VIEJO ROAD
SAN JUAN CAPISTRANO, CA 92675



DRAWN:	SAL
MANAGER:	DCW
REVIEWED:	DCW
PROJECT:	16023
DATE:	7.22.16
REVISION:	

E
3.0b
Single Line

WE # 19028
WOODWARD ENGINEERING
203 SOUTH SMITH ROAD • SUITE 101 • TEMPE, AZ 85281
1-800-891-1907 • 1-602-991-0011 • www.woodward-engineering.com